



Adaptive IT Portfolio Manager™

Adaptive IT Portfolio Manager™ (ITPM) is a web-based repository that is designed for use in application portfolio management, metadata management, service management within SOA initiatives and ensuring regulatory compliance concerning enterprise metadata. It provides an extensible platform for the management of any enterprise assets in the context of the business and out-of-the-box support for the common IT assets.

Adaptive ITPM enables an organization to capture, visualize, reuse, analyze and report on its application and infrastructure portfolio. ITPM harnesses the powerful capabilities of the Adaptive Foundation™ repository platform, to ensure the integrity and security of metadata and ensuring the cost-effective acquisition and use of metadata, especially in the context of service oriented / component based application development approaches.

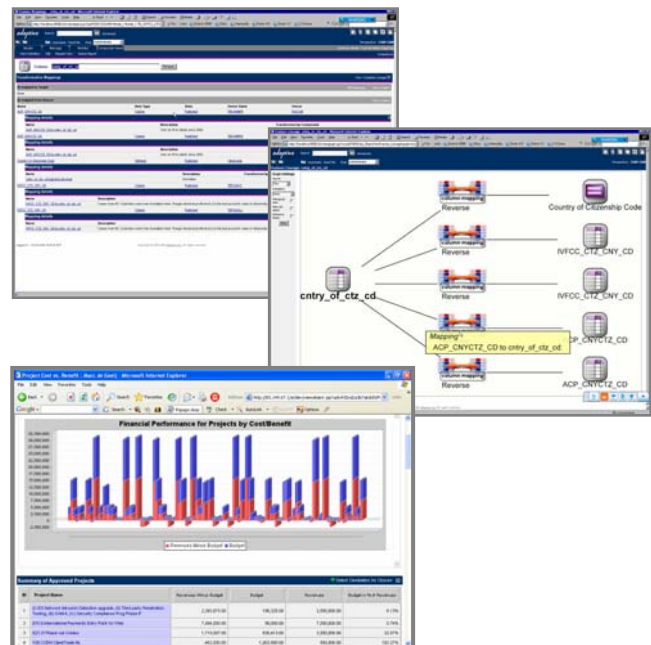
The overriding need to cut costs, increase efficiency and to improve profitability is a significant challenge in today's economy and Adaptive ITPM delivers significant benefits to organizations in addressing these issues.

Adaptive ITPM can be used for the following purposes:

Application Portfolio Management

Adaptive ITPM enables holistic control of an enterprise's application portfolio, by providing views and analysis of the inter-dependencies among projects, applications, interfaces, data, infrastructure and business processes, products and organization structure. Through documenting, managing and understanding its application portfolio, Adaptive ITPM enables an organization to achieve faster time-to-market, track changes to its portfolio and determine the impact of such changes throughout the business.

This supports change initiatives to reduce costs, improve efficiency, respond faster to opportunities and threats and to leverage the value of finite resources and budgets by ensuring that programs and projects align with the business.



Metadata Management

Adaptive ITPM provides a comprehensive understanding of metadata lineage, using its powerful view mechanism to allow aggregated visualization of the lineage of data across disparate systems, applications and tools. Through its market-leading support for the Common Warehouse Metamodel (CWM), a standard of the OMG®, Adaptive ITPM can capture the transformations that take place in the data management environment – for example, via data marts or data warehouses and through to user screens and reports. Information can be captured at any level of detail including database, database schema, table and column and traceably linked to data owners, processes and systems.

Service Management Repository for SOA

For a SOA approach to be successful within large enterprises, there must be a service management repository for managing the interdependencies between processes, applications, services, and data throughout the enterprise. ITPM manages these interdependencies and enables impact analysis to be performed, to discover the effect of replacing or upgrading a specific component on this complex environment. In addition, ITPM provides support for the explicit modeling and analysis of services and messages that are fundamental to a service oriented architecture.

Enforce Governance and Regulatory Compliance

Adaptive ITPM enables organizations to effectively respond to changes in the business environment, such as regulatory requirements, or mergers and acquisitions. By standardizing and consolidating metadata, ensuring metadata accuracy and consistent decision-making, and by providing a single vision of enterprise metadata, organizations mitigate the risk of misinterpretation and miscommunication and increase efficiencies. Metadata transparency is achieved by providing the ability to view and present the lineage of metadata across different systems (i.e. for Basel II transparency and traceability).

Adaptive ITPM has the following powerful and unique repository capabilities that keep you in control of your IT assets:

Searching, Reporting, Querying, Analyzing and Measuring

Sophisticated search functionality and powerful querying mechanisms support searching, analyzing and reporting on the organization's data. Complex searches may be stored for later re-use and repository query capabilities provide advanced reporting functionality

Adaptive ITPM has built-in mechanisms for KPIs, potentially allowing assessments/measures to be recorded against any metadata item for any number of tailorable metric types.

Auditing, Versioning and Impact Analysis

Adaptive has state-of-the-art versioning and configuration management capabilities, including support for parallel development (branching and merging). It provides the ability to compare different versions (controlled via views) and branch, merge, freeze and baseline the versions.

Adaptive's auditing features enable the capture and recording of the full history of changes (create, update, delete information) to objects and stamps all changes made to objects with a time-user stamp. Perspectives (workspaces) define role and time based viewpoints.

Import / Export and Access

Adaptive is designed to act as a metadata hub - managing and coordinating metadata across different tools at the same or different stages in the lifecycle. Metadata is moved through import/export via web services API which may include format or content transformations. The tool primarily imports/exports metadata via XML / XMI. But it also imports information from MS Visio, and MS Excel providing the transformation into appropriate XML / XMI syntax.

Feature Summary

- Comprehensive integrated enterprise meta model
- Open, standards based repository interoperable with multiple modeling/ harvesting/ other tools
- Standards support including MOF, XMI, CWM, UML, OMG Diagram Interchange, SPEM, RAS, and CCA
- Context-specific traceable collaboration capabilities including assessments, discussion groups, event subscriptions and notifications
- Comprehensive security using user, role, object and model based security control
- Enterprise scalable – 100% Java, web-based thin client technology, leveraging robust relational database management system.

Benefits

- Build a complete view of the enterprise and all its critical elements and dependencies
- Capture and integrate models from multiple sources; protect/ harvest investments in existing tools/ models
- Achieve alignment through shared knowledge and collaboration
- Make information relevant to all stages of enterprise architecture planning, and implementation
- Scalable, secure, robust enterprise solution

For Adaptive ITPM system requirements, please visit the Adaptive web site: http://www.adaptive.com/system_requirements.html