



Adaptive Enterprise Architecture Manager™

Adaptive Enterprise Architecture Manager™ (EAM) is a robust knowledge repository solution for organizing, integrating and analyzing information describing the key elements of an enterprise. Adaptive EAM captures the full scope of the Enterprise Architecture, from strategic intent to business processes to enabling resources.

Adaptive's powerful, scalable and web-based technology supports the eleven architectural domains of the Adaptive Reference Model™, used to identify and define the relationships among the key elements of an enterprise, especially its:

- Business Drivers
- Objectives, Strategies & Performance Criteria
- Stakeholders
- Processes
- Resources
- Governance Mechanisms

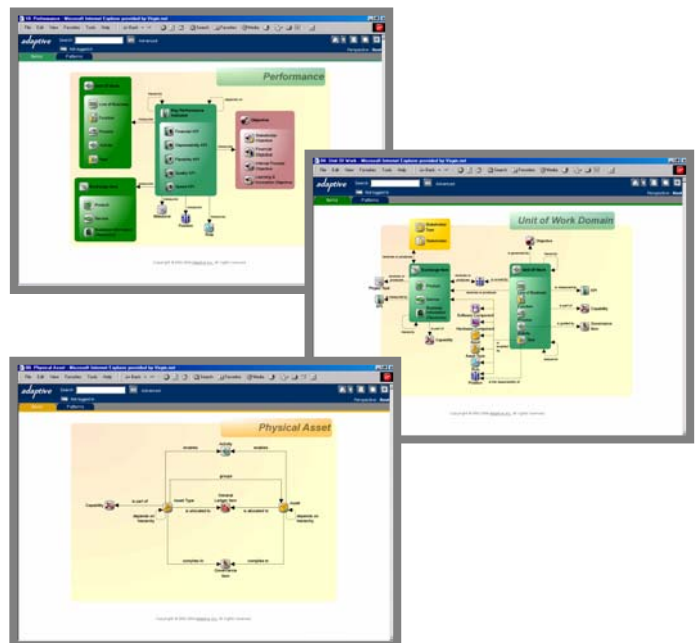
Adaptive EAM integrates this strategic information for more effective communication across the enterprise, and for better decision-making in planning and monitoring continuous performance improvements or transforming the business.

Interfaces with Strategy and Architecture Modeling Tools

The Adaptive Integrator™ suite uses the latest meta-modeling standards to interoperate with over 50 tools, both to import, transform and integrate data, and to export it. It provides full support for a number of out-of-the-box integrations, including:

- Microsoft® Visio®
- Microsoft® Excel®
- IBM® Rational Rose®
- CA® AllFusion Erwin Data Modeler
- Telelogic® System Architect
- Informatica® PowerCenter
- Sybase® PowerDesigner
- Any other UML® or CWM® compliant tool

In addition to the standard interfaces with these other tools, Adaptive Integrator™ can be configured to create custom import and transformation routines that can be linked to create complete reusable processes. These processes can also incorporate your own data capture routines.

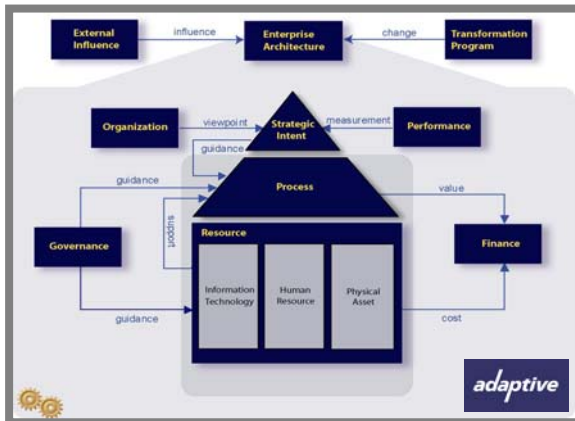


Uses and Benefits

Adaptive Enterprise Architecture Manager™ is being used by some of the world's largest organizations and federal government agencies to:

- Capture strategic intent and ensure it is understood throughout the enterprise
- Develop Enterprise Architectures that align business and IT strategies, processes and resources as the foundation for aligned, synchronized and accelerated business transformation.

Adaptive EAM is a truly web-based application, so is easy to deploy and maintain in large, highly dispersed enterprises, providing enterprise-wide access to strategy and architecture models.



Adaptive Reference Model™

The **External Influence Architecture** is concerned with the context of the organization in focus. It supports the description and analysis of the external environment and in so doing, lays the foundation for defining strategic intent.

The **Transformation Program Architecture** is concerned with the optimal coordination of both single and parallel projects throughout the organization in the context of strategic intent.

The **Strategic Intent Architecture** is the organization's management response to a sometimes-conflicting external demand. It provides direction and sets targets for process.

The **Process Architecture** covers the consolidation and optimization of the entire business process. It describes the process in terms of inputs, outputs, governance and enablers and tracks timing and life-cycles of primary business objects.

The **Organization Architecture** is the formal organization structure, as defined by management in pursuit of the strategic intent.

The **Governance Architecture** strives to create a sense of predictability and accountability by stipulation of different types of governances. e.g. Laws policy, guidelines, standards, best practices etc.

The **Performance Architecture** is a collection of criteria and metrics indicating process performance, resource economics and the achievement of overall strategic intent.

The **Financial Architecture** is the framework for recording and tracking Revenue, Cost of Sales and Expenses.

The **Information Technology Architecture** reflects the blueprint of information technology with regard to applications, information, platforms and networks in the context of the business process it supports.

The **Human Resource Architecture** is concerned with the optimum staffing and utilization of skill sets within the organization.

The **Physical Asset Architecture** tracks physical assets with a major impact on processes and identifies related dependencies.

Feature Summary

- New generation of technology
- Addresses full Enterprise Architecture not just technology/data
- Open/standards-based
- Enterprise scalable and manageable
- 'Best of breed' integration and transformations architecture
- Visual
 - Generated from views
 - Or captured from tools
- Web at the core
 - Not an afterthought
 - Not just browsing
- Extensible
- Customizable
- Role/process-based

Benefits

- Capture and maintain a shareable knowledge base of relevant regulations
- Capture objectives, KPI's and strategies for compliance
- Identify changes to processes and resources required to improve capabilities
- Build a complete view of the enterprise and all its critical elements and dependencies
- Capture and integrate models from multiple sources; protect/ harvest investments in existing tools/ models
- Achieve alignment through shared knowledge and collaboration
- Make information relevant to all stages of enterprise architecture planning, and implementation
- Scalable, secure, robust enterprise solution

For Adaptive EAM system requirements, please visit the Adaptive web site: http://www.adaptive.com/system_requirements.html