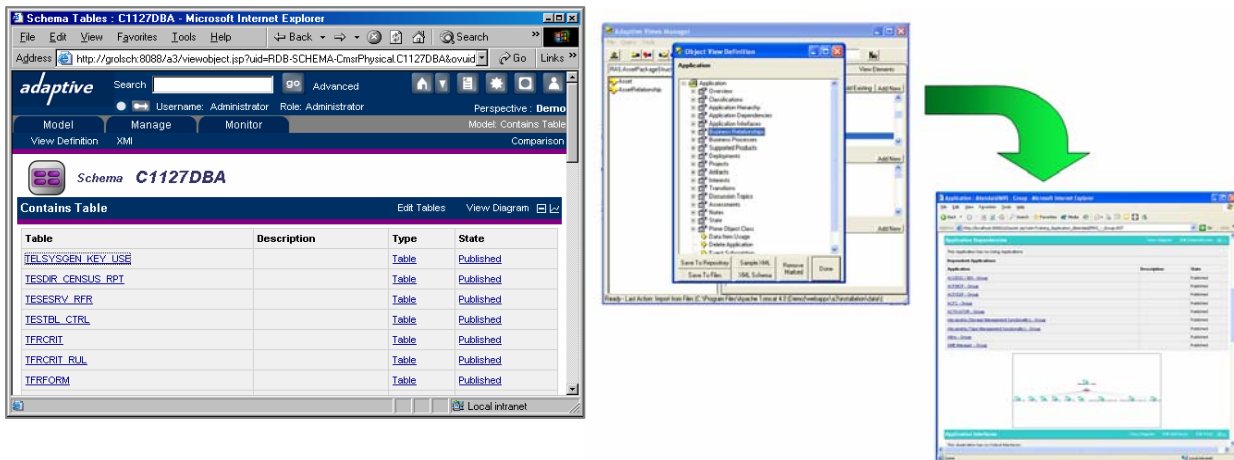


Adaptive Designer licenses can be optionally purchased to enable customization of Adaptive's repository products according to the specific needs of your organization. It can be used to further expose the comprehensive reference model (provided as part of Adaptive's products) and extend the solutions to include classes, attributes and associations held in metamodel extensions introduced by your organization. It is used to extend the scope of the product to include new item types, add new or alternative views, to control what and how information is navigated and displayed in the web browser and to generate new web forms to enable capture and maintenance of information in the repository.



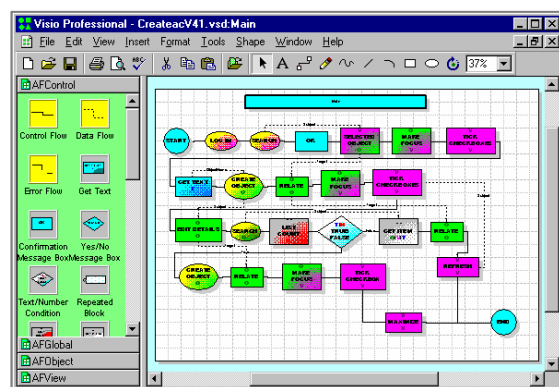
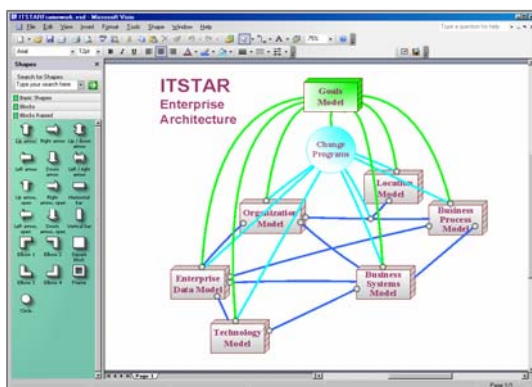
Adaptive Designer™ includes a collection of tools: Adaptive Views Manager™, Adaptive Process Manager™ and Adaptive Forms Manager™. It models the Views, Forms and Processes that make up an Adaptive Adaptation, or extensions to it.

## What can Adaptive Designer™ be used for?

- Automate **custom methodologies, reference models and frameworks**, including their terminology, semantics and graphic style
- Rapidly develop a **custom metadata repository** using the latest standards and technologies, but without the risk and long-term development commitment of a from-scratch solution
- Tailor the user interface to comply with an organization's **standards and conventions**
- Create a **customized role-based user interface** including views, forms and processes to enable each user role to work effectively, accessing the information they need, when they need to take actions and make decisions effectively
- Implement **custom processes** to automate the flow of information through the repository
- Enable **integration with external data sources** (tools, applications, databases...) with zero data loss during information exchange. This is accomplished by making any metamodel extensions required to fully capture the data semantics of an external data source.

## Key Features of Adaptive Designer™

- Adaptive Designer's Microsoft® Office Visio "Navigation Map Generator" stencil provides a WYSIWYG means of creating **interactive graphical web pages** for organizing the access to repository information according to the specific frameworks and reference models that are right for your organization
- Views Manager enables the **model-based definition of custom report types** that users can then generate for a set of items they select, or are the result of evaluating a query and/or interactive filtering
- Define **access control rules** for users, user groups and roles
- Create **custom processes** to guide users automatically through potentially complex, constrained and parameterized metadata updates or query/report evaluations
- Create **custom Visio based graphical modeling techniques** that support tight bi-directional integration with the Adaptive Repository
- Use a UML modeling tool to **define a metamodel extension as a UML class diagram** and import it into the Adaptive Repository using OMG's XMI (XML Metadata Interchange) format.
- Powerful query mechanism** to define complex relationship navigations to be followed and filters to apply. These queries are reusable definitions that can be used by Forms Manager during the creation or editing of views. In addition, these queries can be directly evaluated by users.



## Adaptive Designer™ System Requirements

Adaptive Designer is provided in a self installing package, requiring the following minimum system configuration:

- Windows XP, 1 CPU 2GHz, 512MB RAM, 10GB disk space

Additional software that must be installed (or already resident) is:

- MSSOAP 3.0 (which includes MSXML 4.0)

This can be downloaded from:

<http://www.microsoft.com/downloads/details.aspx?FamilyId=C943C0DD-CEEC-4088-9753-86F052EC8450&displaylang=en>

or

- MS Office SOAP 2003

Which can be downloaded from:

[http://msdn.microsoft.com/library/default.asp?url=/library/en-us/dnxpwst/html/odc\\_wstoolkitoverview.asp](http://msdn.microsoft.com/library/default.asp?url=/library/en-us/dnxpwst/html/odc_wstoolkitoverview.asp)